



CORSL

Product Folder



CONTENTS.

02 *DALI-2
DMUmini*

05 *DALI-2
PIR2L*

06 *DALI-2
PIR2L-BLE*

07 *DALI-2
PIR3L*

08 *DALI-2
PIR3L-BLE*

09 *DALI-2
SWITCH4T*

10 *DALI-2
ROT-P*

12 *DALI-2
ROT-L*

13 *DALI-2
SWITCH6A*

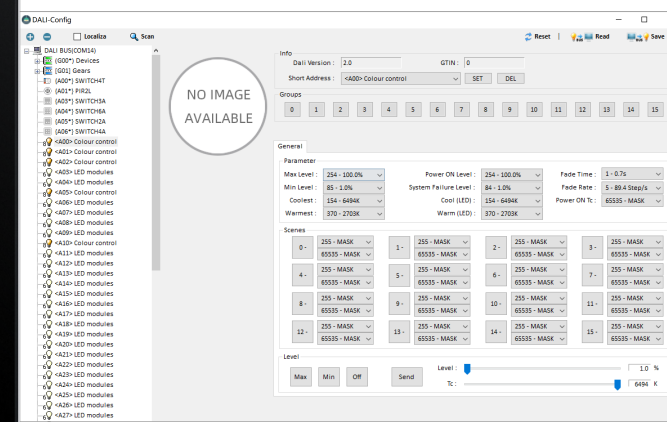
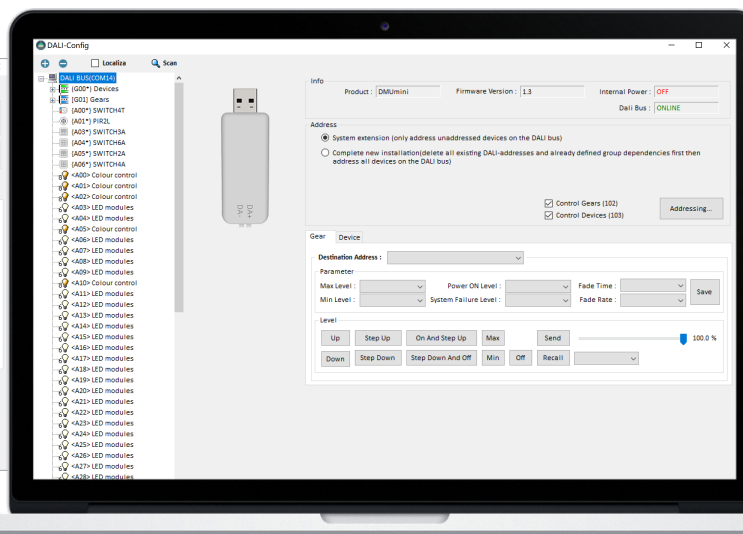
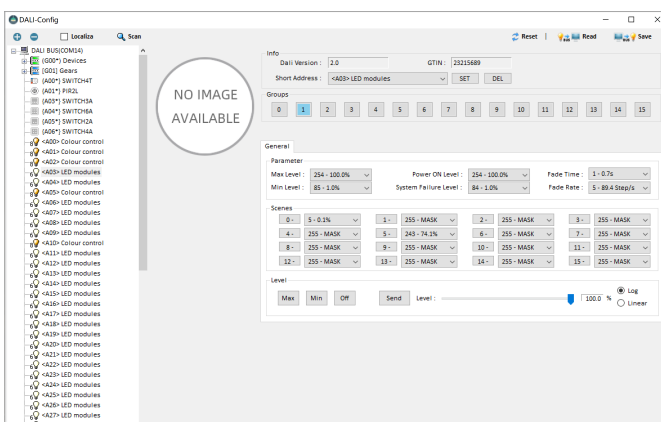
14 *DALI-2
SWITCH8A*

DMUmini

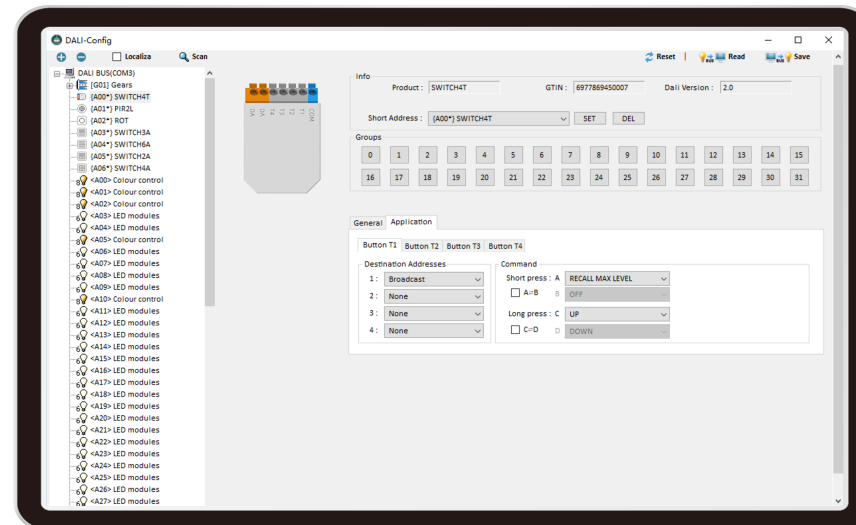
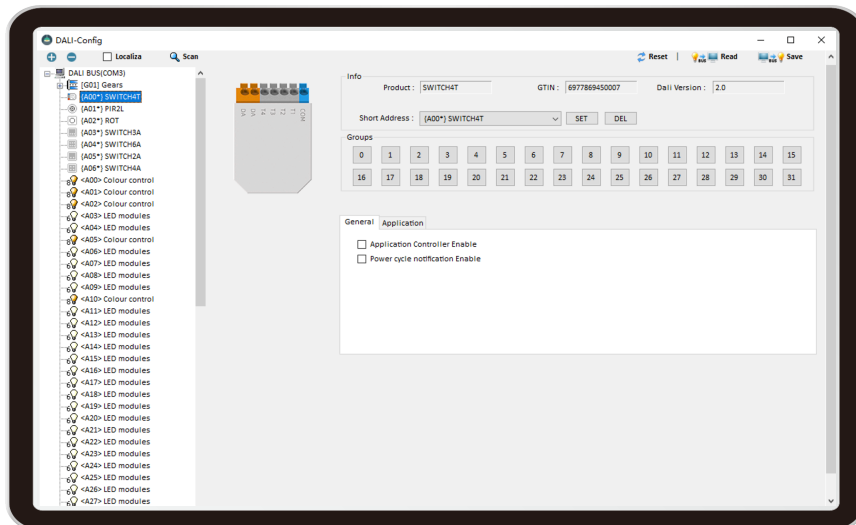
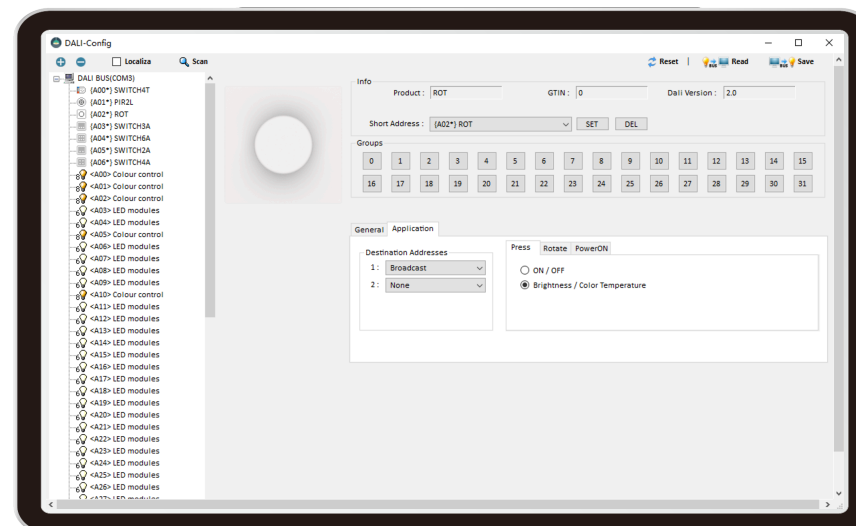
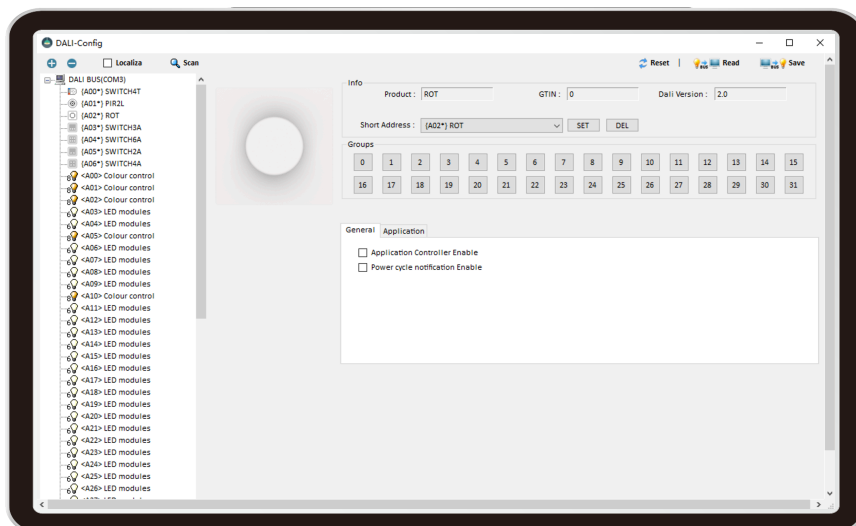
- It must be used with DALI-Config software.
- You can use DMUmini to configure control gears and control devices.
- If no higher-level central control units or the central control unit doesn't support IEC62386-103 on the DALI Bus, with the help of DMUmini and DALI-Config software, you can address the control device first and activate it to **'application controller'** mode, then configuration.
- The DALI Bus Power of DMUmini can supply is 80mA. if any device integration DALI Bus Power supply on the DALI-line, the DALI Bus Power of DMUmini will automatically close. If no DALI Bus Power supply on the DALI-line, the DALI Bus Power of DMUmini will automatically open.



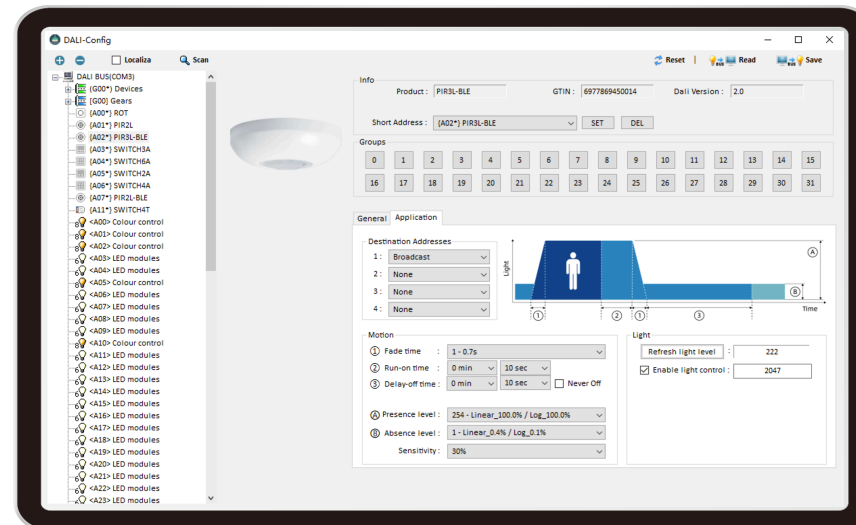
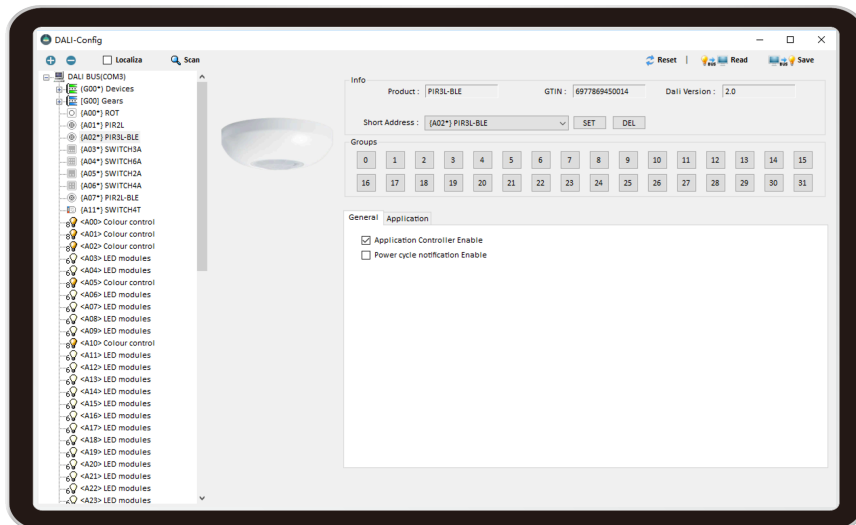
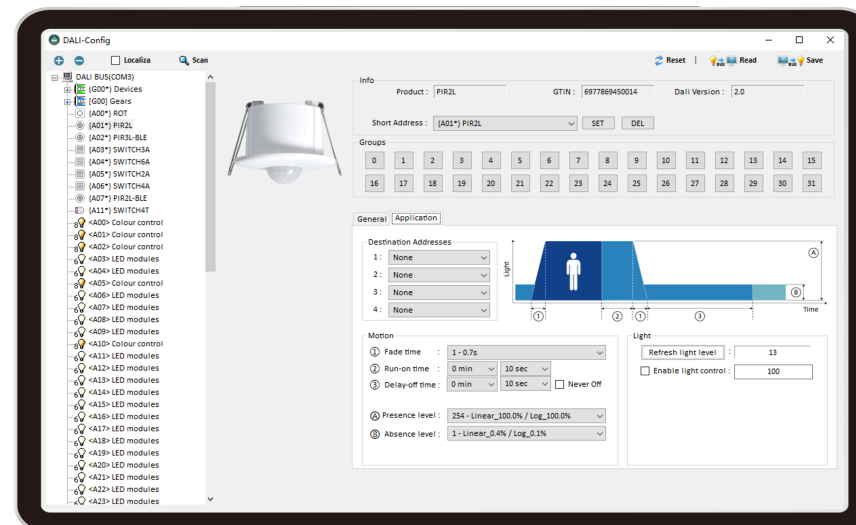
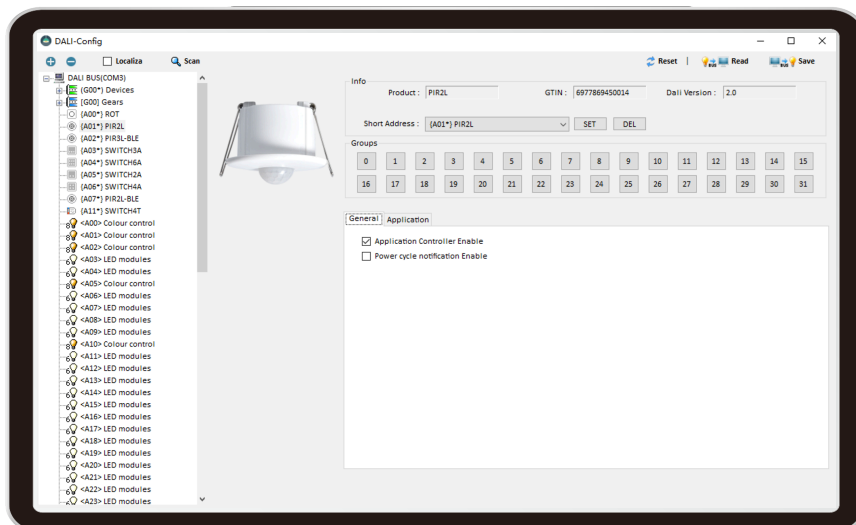
Model No	ARTICLE NUMBER	SUPPLY	OPERATING TEMP. (TA)	DIMENSIONS (MM)
DMUmini	8980010221100	via USB of computer	-20°C ~ +75°C	70mm * 23.5mm * 15.5mm



DMUmini



DMUmini



≡ PIR2L

- operating mode:
 - **input device:** generates input notifications (event messages) that are interpreted and processed by the central control units(support IEC62386-103),the control units gives direct DALI control commands that are immediately executed by the DALI drivers. you can use the central control units(support IEC62386-103) to address and configuration the function of the device.
 - **application controller:** gives direct DALI control commands that are immediately executed by the DALI drivers. If no higher-level central control units or central control unit doesn't support IEC62386-103 on the DALI Bus, with the help of DMUmini and DALI-Config software, you can address the device first and activate it to 'application controller' mode, then configuration or location.
- Function:
 - Movement triggered
 - Movement triggered with Illuminance threshold
- The DALI-interface can handle mains voltage, protecting the device in case of wrong wiring.
- Supply via the DALI bus.

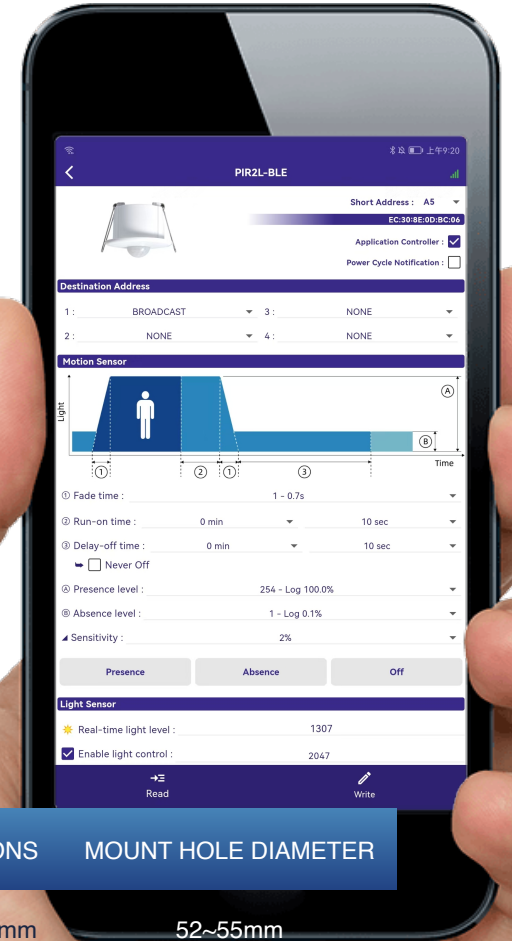


Model No	ARTICLE NUMBER	FACTORY SETTING	SUPPLY	CURRENT CONSUMPTION DALI	OPERATING TEMP. (TA)	DIMENSIONS	MOUNT HOLE DIAMETER
PIR2L	8980100321120	input device	via DALI line	typ. 4mA	-20°C~ +60°C	65mm* 52mm	52~55mm

≡ PIR2L-BLE



- operating mode:
 - **input device:** generates input notifications (event messages) that are interpreted and processed by the central control units(support IEC62386-103),the control units gives direct DALI control commands that are immediately executed by the DALI drivers. you can use the central control units(support IEC62386-103) to address and configuration the function of the device. you can also use APP to set the address, sensitivity, location.
 - **application controller:** gives direct DALI control commands that are immediately executed by the DALI drivers . If no higher-level central control units or central control unit doesn't support IEC62386-103 on the DALI Bus, with the help of DMUmini or APP, you can address the device first and activate it to 'application controller' mode, then configuration or location.
- Function:
 - Movement triggered
 - Movement triggered with Illuminance threshold
 - The DALI-interface can handle mains voltage, protecting the device in case of wrong wiring.
 - Supply via the DALI bus.



APP(BLE)

Model No	ARTICLE NUMBER	FACTORY SETTING	SUPPLY	CURRENT CONSUMPTION DALI	OPERATING TEMP (TA)	DIMENSIONS	MOUNT HOLE DIAMETER
PIR2L-BLE	8980120321120	input device	via DALI line	typ. 7mA	-20°C~ +60°C	65mm* 52mm	52~55mm

≡ PIR3L

- operating mode:
 - **input device:** generates input notifications (event messages) that are interpreted and processed by the central control units(support IEC62386-103),the control units gives direct DALI control commands that are immediately executed by the DALI drivers. you can use the central control units(support IEC62386-103) to address and configuration the function of the device.
 - **application controller:** gives direct DALI control commands that are immediately executed by the DALI drivers. If no higher-level central control units or central control unit doesn't support IEC62386-103 on the DALI Bus, with the help of DMUmini and DALI-Config software, you can address the device first and activate it to 'application controller' mode, then configuration or location.
- Function:
 - Movement triggered
 - Movement triggered with Illuminance threshold
- The DALI-interface can handle mains voltage, protecting the device in case of wrong wiring.
- Supply via the DALI bus.

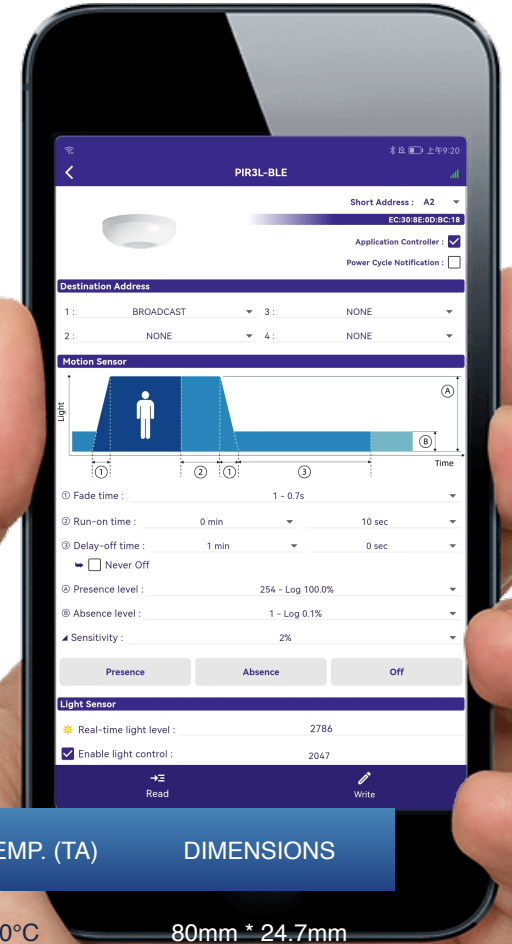


Model No	ARTICLE NUMBER	FACTORY SETTING	SUPPLY	CURRENT CONSUMPTION DALI	OPERATING TEMP. (TA)	DIMENSIONS
PIR3L	8980110321120	input device	via DALI line	typ. 4mA	-20°C~ +60°C	80mm * 24.7mm

≡ PIR3L-BLE



- operating mode:
 - **input device:** generates input notifications (event messages) that are interpreted and processed by the central control units(support IEC62386-103),the control units gives direct DALI control commands that are immediately executed by the DALI drivers. you can use the central control units(support IEC62386-103) to address and configuration the function of the device. you can also use APP to set the address, sensitivity, location.
 - **application controller:** gives direct DALI control commands that are immediately executed by the DALI drivers. If no higher-level central control units or central control unit doesn't support IEC62386-103 on the DALI Bus, with the help of DMUmini or APP, you can address the device first and activate it to 'application controller' mode, then configuration or location.
- Function:
 - Movement triggered
 - Movement triggered with Illuminance threshold
 - The DALI-interface can handle mains voltage, protecting the device in case of wrong wiring.
 - Supply via the DALI bus.

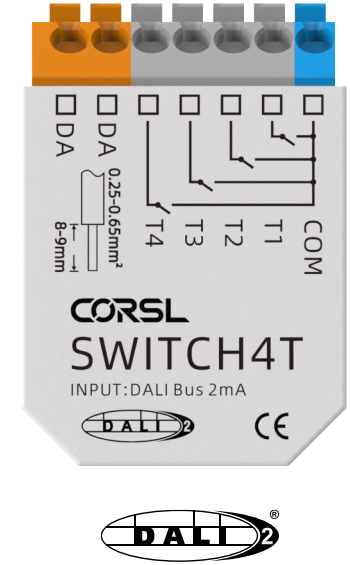


APP(BLE)

Model No	ARTICLE NUMBER	FACTORY SETTING	SUPPLY	CURRENT CONSUMPTION DALI	OPERATING TEMP. (TA)	DIMENSIONS
PIR3L-BLE	8980130321120	input device	via DALI line	typ. 7mA	-20°C~ +60°C	80mm * 24.7mm

≡ SWITCH4T

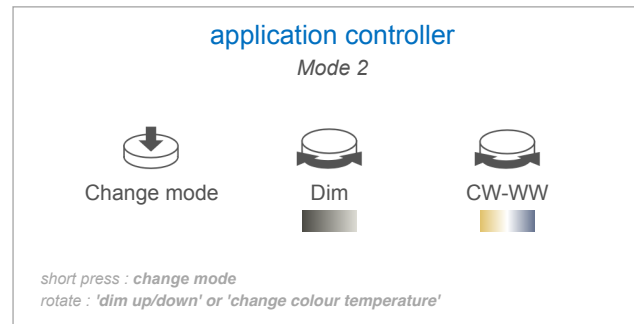
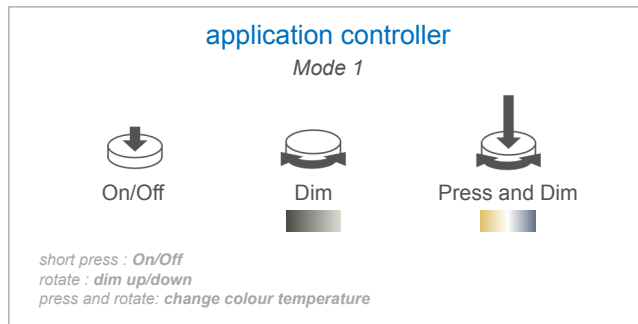
- DALI-2 switch input modules can be added to convert normal 'push-to-make' switches to DALI-2 switches.
- In addition to the standard DALI commands, the application controller also supports DALI DT8 TC control.
- operating mode:
 - **input device:** generates input notifications (event messages) that are interpreted and processed by the central control units(support IEC62386-103),the control units gives direct DALI control commands that are immediately executed by the DALI drivers. you can use the central control units(support IEC62386-103) to address and configuration the function of the device.
 - **application controller:** gives direct DALI control commands that are immediately executed by the DALI drivers. If no higher-level central control units or central control unit doesn't support IEC62386-103 on the DALI Bus, with the help of DMUmini and DALI-Config software, you can address the device first and activate it to 'application controller' mode, then configuration or location.
- The DALI-interface can handle mains voltage, protecting the device in case of wrong wiring.
- Supply via the DALI bus.



Model No	ARTICLE NUMBER	FACTORY SETTING	SUPPLY	CURRENT CONSUMPTION DALI	OPERATING TEMP. (TA)	DIMENSIONS (MM)
SWITCH4T	8980040321120	input device	via DALI line	typ.2mA	-20°C ~ +75°C	40.5mm*28mm*14.5mm

≡ ROT-P

- DALI-2 rotary switch for switching, dimming, colour and colour temperature control.
- operating mode:
 - **input device:** generates input notifications (event messages) that are interpreted and processed by the central control units(support IEC62386-103),the control units gives direct DALI control commands that are immediately executed by the DALI drivers. you can use the central control units(support IEC62386-103) to address and configuration the function of the device.
 - **application controller:** gives direct DALI control commands that are immediately executed by the DALI drivers. If no higher-level central control units or central control unit doesn't support IEC62386-103 on the DALI Bus, with the help of DMUmini and DALI-Config software, you can address the device first and activate it to 'application controller' mode, then configuration or location.



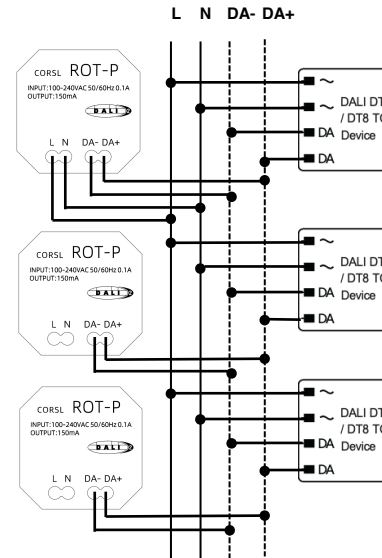
- Connection:
 - A: 150mA integrated DALI bus power can supply on the DALI-line when 'L' and 'N' connected to AC mains.
 - B: When the 'L' and 'N' of the ROT-P is inactive, The DALI-2 ROT-P module is connected and supplied directly by the DALI-line (typ. current consumption: 2 mA).



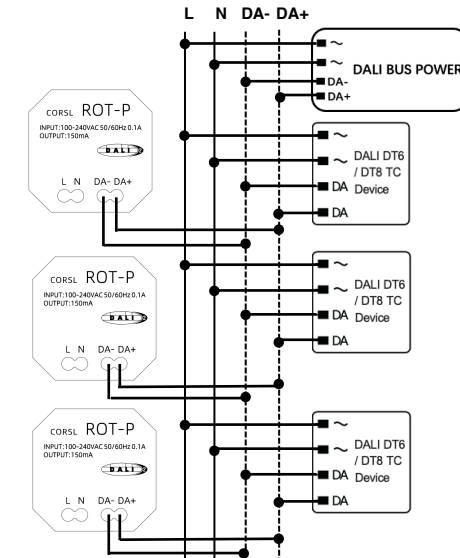
≡ ROT-P

Only one DALI bus power can supply on one DALI-line.

DALI-power supplied by ROT-P



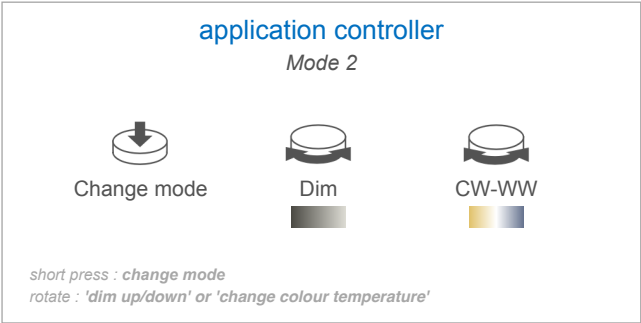
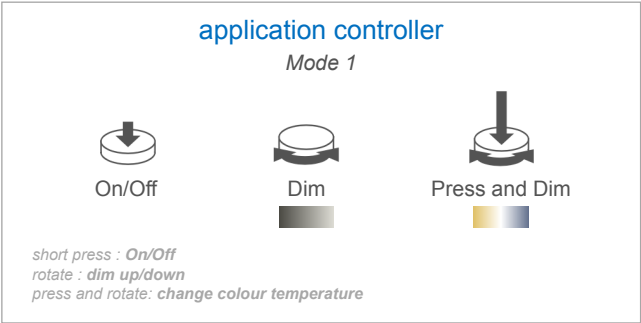
DALI-power supplied by external DALI BUS POWER



Model No	ARTICLE NUMBER	L、N	FACTORY SETTING	SUPPLY	CURRENT CONSUMPTION DALI	OPERATING TEMP. (TA)	DIMENSIONS (MM)	REMARK
ROT-P	8980020321120	active	input device	AC(100~240VAC, 50/60Hz)	/	-20℃ ~ +55℃	85mm*85mm*52mm	European
		inactive	input device	via DALI line	typ.2mA	-20℃ ~ +75℃	85mm*85mm*52mm	European

≡ ROT-L

- DALI-2 rotary switch for switching, dimming, colour and colour temperature control.
- operating mode:
 - **input device:** generates input notifications (event messages) that are interpreted and processed by the central control units(support IEC62386-103),the control units gives direct DALI control commands that are immediately executed by the DALI drivers. you can use the central control units(support IEC62386-103) to address and configuration the function of the device.
 - **application controller:** gives direct DALI control commands that are immediately executed by the DALI drivers. If no higher-level central control units or central control unit doesn't support IEC62386-103 on the DALI Bus, with the help of DMUmini and DALI-Config software, you can address the device first and activate it to 'application controller' mode, then configuration or location.

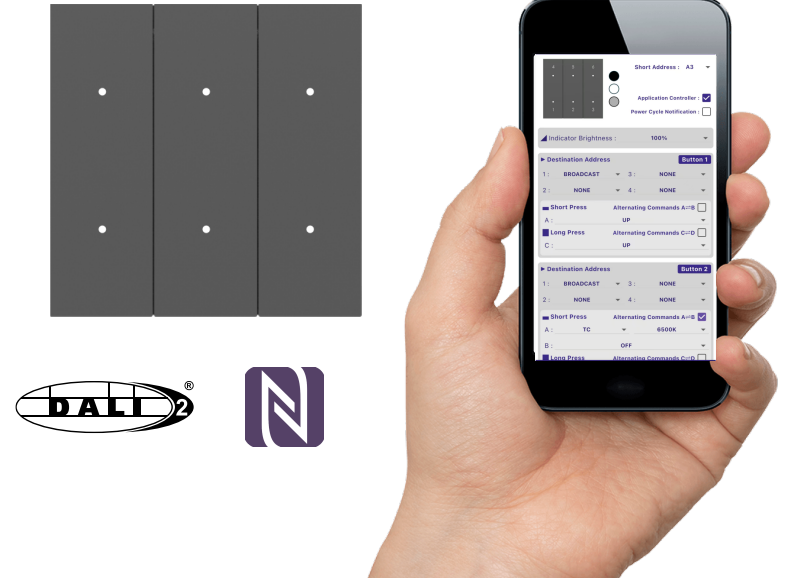


- ROT-L module is connected and supplied directly by the DALI-line (typ. current consumption: 2 mA).
- ROT-L's DALI-interface can handle mains voltage, protecting the device in case of wrong wiring.

Model No	ARTICLE NUMBER	FACTORY SETTING	SUPPLY	CURRENT CONSUMPTION DALI	OPERATING TEMP. (TA)	DIMENSIONS (MM)	REMARK
ROT-L	8980030321120	input device	via DALI line	typ.2mA	-20°C~ +75°C	85mm*85mm*52mm	European standard

≡ SWITCH6A

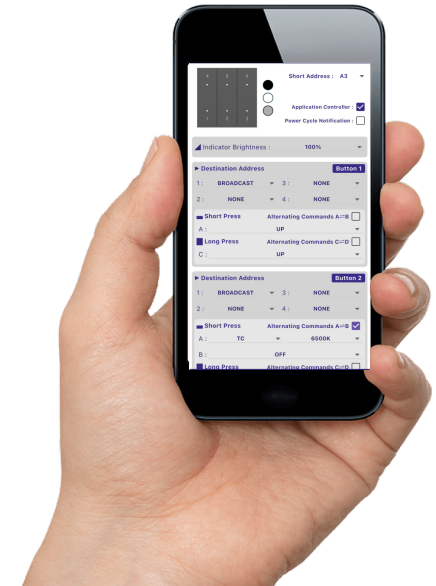
- operating mode:
 - input device:** generates input notifications (event messages) that are interpreted and processed by the central control units(support IEC62386-103), the control units gives direct DALI control commands that are immediately executed by the DALI drivers. you can use the central control units(support IEC62386-103) to address and configuration the function of the device.
 - application controller:** gives direct DALI control commands that are immediately executed by the DALI drivers. If no higher-level central control units or central control unit doesn't support IEC62386-103 on the DALI Bus, with the help of DMUmini and DALI-Config software, you can address the device first and activate it to 'application controller' mode, then configuration or location.
- The DALI-interface can handle mains voltage, protecting the device in case of wrong wiring.
- Supply via the DALI bus.



Model No	ARTICLE NUMBER	COLOUR	FACTORY SETTING	SUPPLY	CURRENT CONSUMPTION DALI	OPERATING TEMP. (TA)	DIMENSIONS (MM)	REMARK
SWITCH6A	8980080121120	black	input device	via DALI line	typ.4mA	-20°C~ +75°C	85.6*85.6*27.5	European
SWITCH6A	8980080221120	gray	input device	via DALI line	typ.4mA	-20°C~ +75°C	85.6*85.6*27.5	European
SWITCH6A	8980080321120	white	input device	via DALI line	typ.4mA	-20°C~ +75°C	85.6*85.6*27.5	European

≡ SWITCH8A

- operating mode:
 - **input device:** generates input notifications (event messages) that are interpreted and processed by the central control units(support IEC62386-103),the control units gives direct DALI control commands that are immediately executed by the DALI drivers. you can use the central control units(support IEC62386-103) to address and configuration the function of the device.
 - **application controller:** gives direct DALI control commands that are immediately executed by the DALI drivers. If no higher-level central control units or central control unit doesn't support IEC62386-103 on the DALI Bus, with the help of DMUmini and DALI-Config software, you can address the device first and activate it to 'application controller' mode, then configuration or location.
- The DALI-interface can handle mains voltage, protecting the device in case of wrong wiring.
- Supply via the DALI bus.



Model No	ARTICLE NUMBER	COLOUR	FACTORY SETTING	SUPPLY	CURRENT CONSUMPTION DALI	OPERATING TEMP. (TA)	DIMENSIONS (MM)	REMARK
SWITCH8A	8980090121120	black	input device	via DALI line	typ.5mA	-20°C~ +75°C	85.6*85.6*27.5	European
SWITCH8A	8980090221120	gray	input device	via DALI line	typ.5mA	-20°C~ +75°C	85.6*85.6*27.5	European
SWITCH8A	8980090321120	white	input device	via DALI line	typ.5mA	-20°C~ +75°C	85.6*85.6*27.5	European



CORSL

HONGKONG CORSL TECHNOLOGY LIMITED



+086 13923882807



www.corsl-tech.com
mike@wanxiucx.com



Shenzhen, China

Copyright 2025 HONGKONG CORSL TECHNOLOGY LIMITED